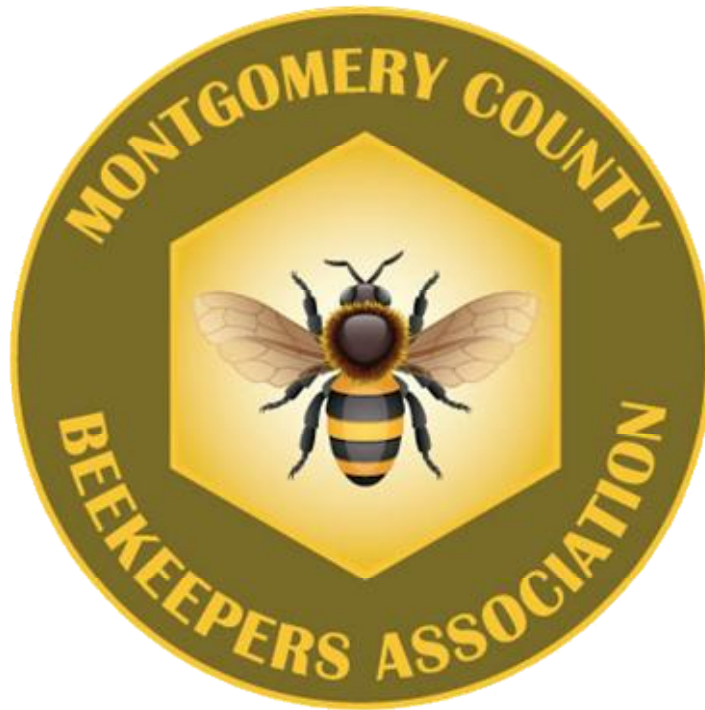


Your Bees Are About To Arrive – Are You Ready?

(And, For Those Existing Hives, Are You Ready For Spring?)

– February 2017 –



**Micky Cross
Co-First Vice President**



OVERVIEW

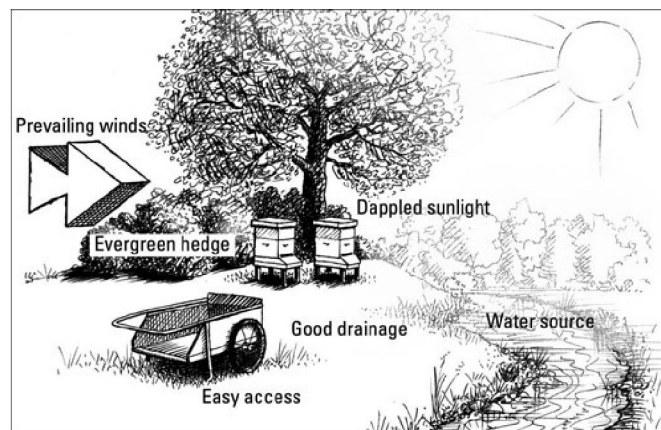
- **Hive Location**
- **Hive Set Up**
- **Receiving Bees**
 - **Via Nucleus ("Nuc")**
 - **Via Package**
- **Feeding**
- **Goal of First Inspection**
 - **New Hive**
 - **First Spring Inspection For Existing Hives**
- **Be Ready For Swarm Season**





Hive Location

- Inconspicuous
 - Neighbors May Have Fear of Stinging Insects
 - Home Owner's Association Concerns
 - Be A Good Neighbor
 - Let Them Know
 - Give Them Honey
 - Visibility (Fencing, Hedges)
 - Paint Color
- Water Source
- Initial Foraging Flight Path
- Accessibility
 - Vehicle Access
 - Carrying Honey Supers
- Livestock
- Sun Exposure



Credit: Illustration courtesy of Howland Blackiston
The perfect suburban setting for your hives has easy access, good drainage, a nearby water source, dappled sunlight, and minimal wind.





Hive Set-Up

- **Hive Stand**

- Off The Ground
- Easy On Your Back



- **Spacing/Arrangement**

- Room To Work
- Separation Distance
- Drifting



- **Level**

- Level Right-to-Left
- Slight Incline to the Front

- **Facing**

- Not As Critical As Sometimes Asserted
- Opening Not Facing Prevailing Winds
- East to South-East All Else Being Equal





Installing A Nucleus (Nuc)

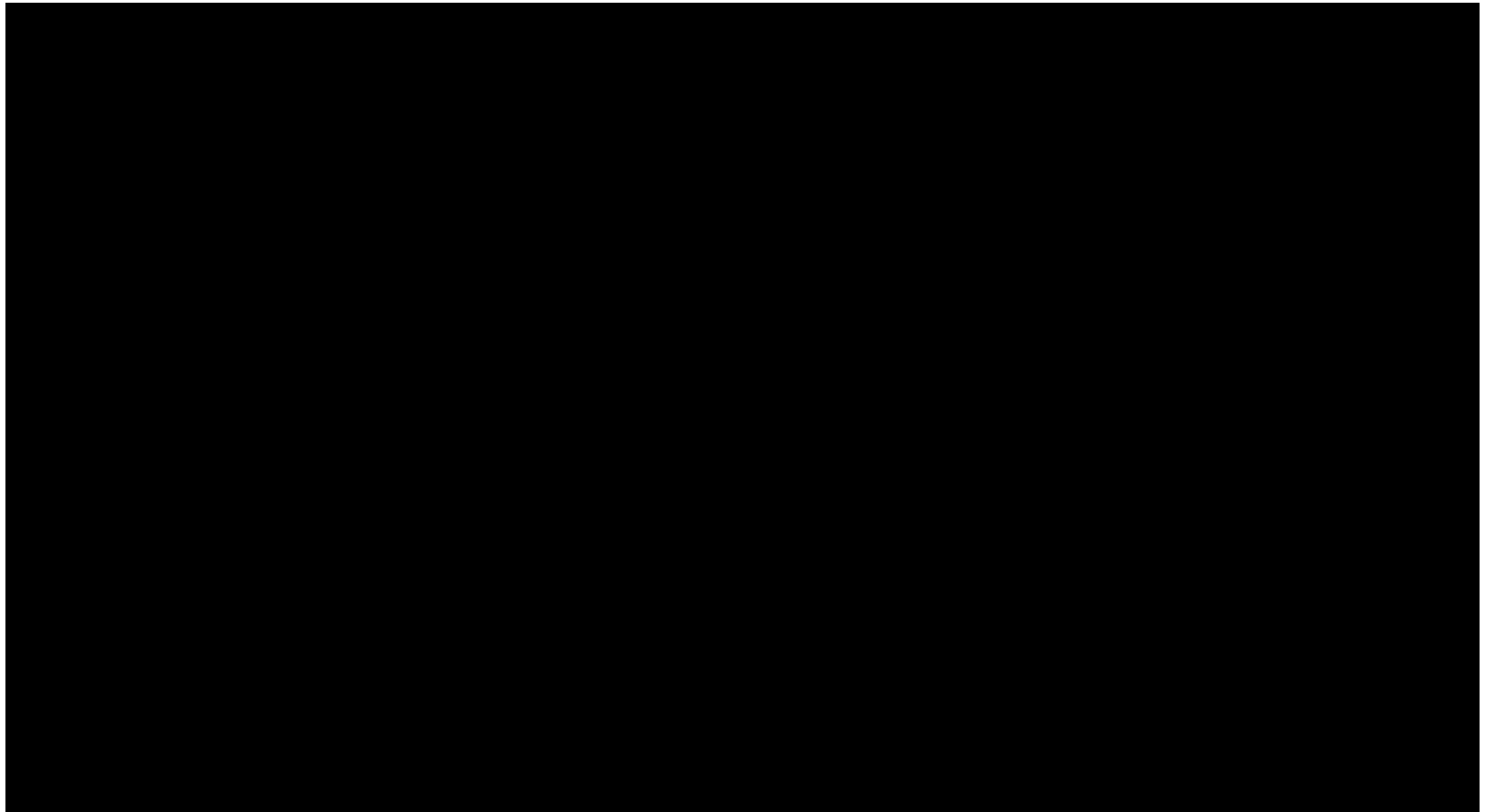
- **Full, Functioning Hive**
 - Can Stay in Nuc Box For A While if Needed (Open the entrance)
 - Best to Install Right Away When Possible
 - Have Native Food Stores, So Can Use Smoke
- **Move The Frames From the Nuc To The Hive Brood Box**
 - Start With Outside Frame
 - Keep In Same Order and Orientation
 - Place In The Middle of the Deep
 - Fill In the Outside Slots With Empty Frames
- **Mind the Queen**
 - Check Each Frame and Handle Them As If The Queen Is There
 - If Not Seen, Assume The Queen Is Still In The Box



Damaging The Queen Is The Only “Critical” Mistake You Can Make



Installing A Nucleus (Nuc)





Installing a Package & Queen

- **Not A Full, Functioning Hive**
 - **Need To Install As Soon As Possible**
 - If Have To Wait, Store in Dark, Cool, Dry Area – Keep Them Fed
 - **No Native Food Stores, Just the Feeding Cup – Don't Use Smoke**
 - **Sugar Syrup Sprayer (1 to 1)**
- **Three Primary Ways**
- **Basics The Same For All**
 - **Remove The Feeding Can From The Package**
 - **Remove The Queen Cage From The Package**
 - **Remove The Cork From The Candy End of The Queen Box**
 - **Punch Hole In Candy**
 - **Hang Queen Between Frames**
- **Difference Is In How To Put The Bees Into The Brood Box**





Installing a Package & Queen

- Putting The Bees Into The Brood Box -

- **“Box-in-Box” Method**

- Remove Half The Frames From One Side of The Box
- Install Queen Cage
- Place the Package Box Into The Brood Box & Remove Cover
- Return In a Few Days To Remove Package Box and Add Frames



- **“Pour/Shake” Method -- Two Variations**

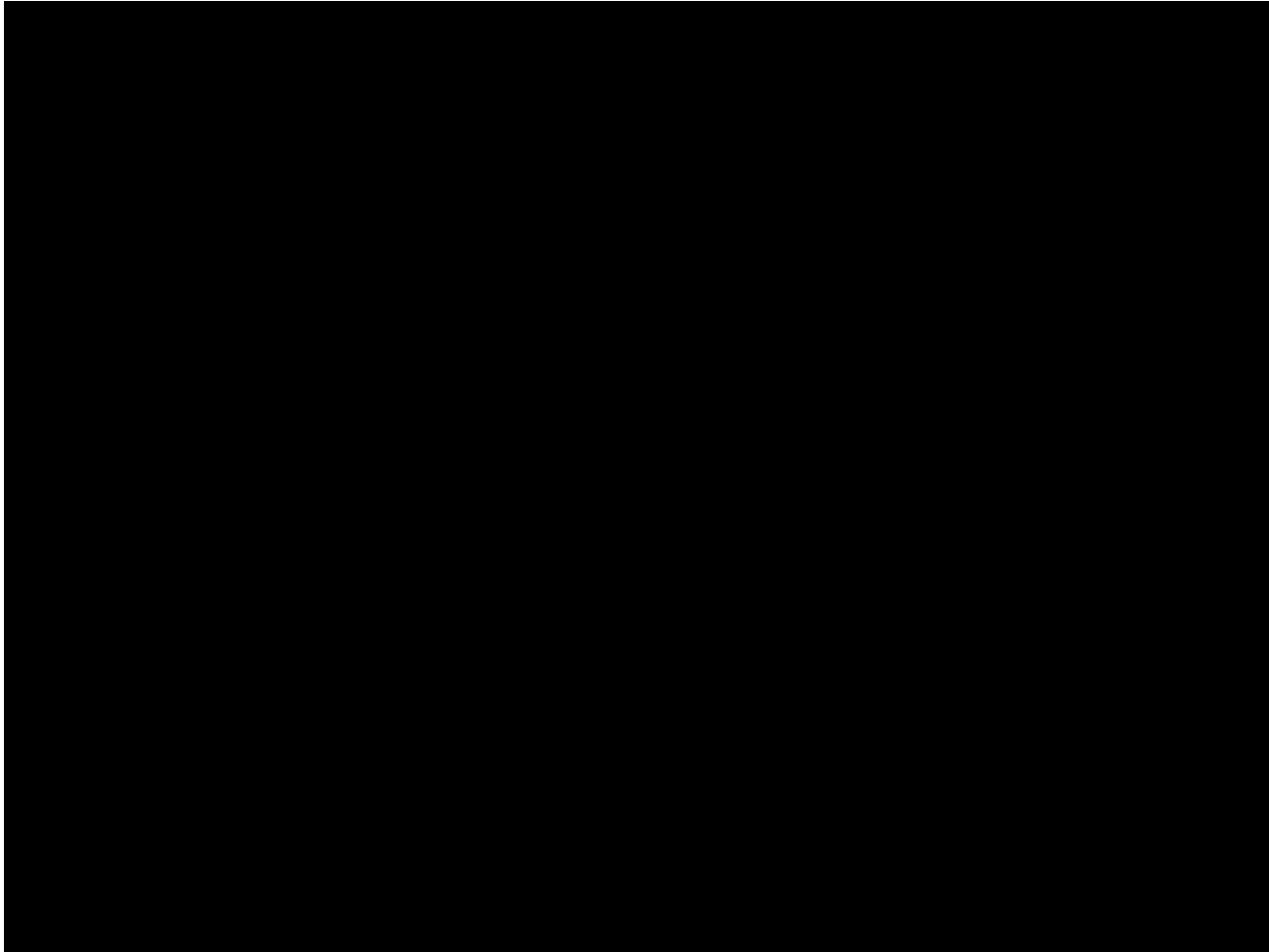
- **One (All Frames Left In)**
 - Install Queen Cage
 - “Bump” The Bees To The Bottom of The Package
 - Pour Them Onto The Top of The Frames (Over the Queen)
- **Two (Remove Half the Frames From the Center)**
 - “Bump” The Bees To The Bottom of The Package
 - Pour Them into the Bottom of The Box
 - Replace the Center Frames and Install Queen Cage
 - Replace Frames



Improperly Placing The Queen Is The Only “Critical” Mistake You Can Make



Installing a Package & Queen





Feed Your New Hive

- Assuming Bare Frames With No Drawn Comb -

- The First Thing The Bees Have To Do Is Build Comb.
 - Place to Live, Place For Food, Place For Eggs & Brood
 - Without Comb The Colony Cannot Survive
 - Without Enough Food To Build Comb, Colony Build-up Will Be Slow.
- Steady Supply Of Sugar Syrup Makes The Process Quicker & Easier.
- How Long?
 - Most Beekeepers Draw The Line At Some Point & Stop Feeding
 - Unfortunately, Every Beekeeper Will Give You A Different Answer
 - Some Feed Syrup Until There Are Five Or Six Fully-drawn Frames
 - Some Feed Until They Have Two Brood Boxes Full Of Drawn Comb
 - Some Feed The Entire First Season (Not Harvesting Honey)
 - Err On Side Of Feeding — New Colonies Need All The Help They Can Get



Essentially, No Amount Of Sugar Syrup Is Too Much The First Year



Making Sugar Syrup

- **Use White, Granulated Sugar**
 - Cane Sugar Most Often Recommended
 - Beet Sugar Essentially The Same, But May Be From Genetically Modified Organism (GMO) Sugar Beets
 - Cheapest Cane Sugar Should Be Fine
- **Generally Hot Tap Water Is Sufficient To Put Sugar In Solution**
 - May Have To Heat Water On Stove For High Sugar Concentrations
 - Do Not Put Sugar Into Boiling Water or Boil Water After Sugar Added
 - “Burned” or Caramelized Sugar Can Cause The Formation of HMF (Hydroxymethylfurfural) Which Is Toxic To Bees



It Is **ALWAYS** OK To Feed Your Bees As Long As You Don't Have Any Honey Supers You Intend to Harvest On The Hive



Making Sugar Syrup

- Recipes -

One Cup Nearly Boiling Water Weighs ~ 8 ounces (1/2 a pound)

Amount of Sugar	Two Parts Sugar To One Part Water (2:1)	One Part Sugar To One Part Water (1:1)	One Part Sugar To Two Parts Water (1:2)
1 Pound	1 Cup	2 Cups	4 Cups (1 Quart)
4 Pounds	4 Cups (1 Quart)	8 Cups (2 Quarts)	16 Cups (1 Gallon)
5 Pounds	5 Cups	10 Cups	20 Cups
8 Pounds	8 Cups (2 Quarts)	16 Cups (1 Gallon)	32 Cups (2 Gallons)
10 Pounds	10 Cups	20 Cups	40 Cups

2:1 – Used in the fall to increase food stores in preparation for winter.

1:1 – Used in the spring & summer to encourage comb building. Used for new hives and splits. Sprayer

1:2 – Used in early spring to stimulate egg laying (when honey is available for the brood)

Note: One Cup of Sugar Weighs ~ 7 Ounces – So Equal Containers Make ~ 1:1



Hive Inspections

- **Always Have A Plan – Write it Down**
- **Inspect From The Outside**
 - **Bee Flight, Pollen Coming In, Signs of Pests, Sounds, Odd Smells, Dead Bees**
- **Open The Hive**
 - **Sunny Day When Foragers Are Outside the Hive**
 - **Accomplish The Plan And Get Out**
 - **Details Beyond Scope For Today**
 - Lot's of Good Info On-Line and In Books
- **Record What You Did / Saw**
 - **Journal, On The Hive, Spreadsheet**
 - **Commercial Software**
 - (HiveTracks, Beetight, BeeRm, BeeCloud, etc.)



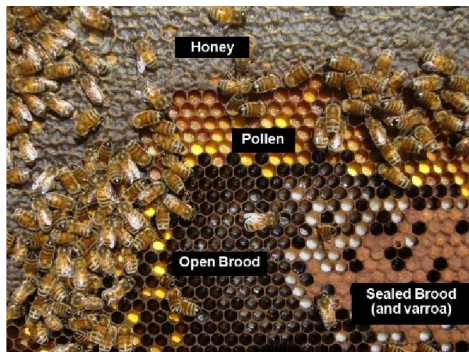


Hive Inspections

- Goal For First Inspection -

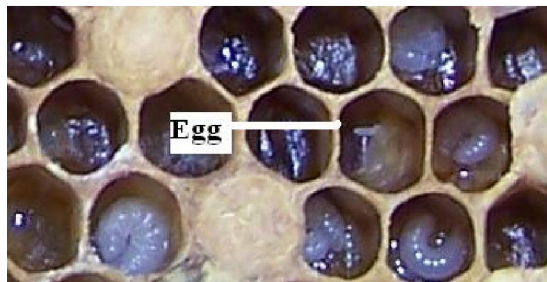
- New Hive From “Nuc”

- When: After 5 to 7 Days
- Confirm Evidence of Queen
- Confirm New Comb
- Confirm Space is Available
- Inspect Again Every Two Weeks



- Existing Hive

- Early Spring (Over 50 F)
- Confirm Queen Activity
- Mange Space
 - Add Brood Box
 - Reverse Brood Boxes
 - Move Empty Frames
- Help Weak Hives
 - Combine
 - Add Brood



- New Hive From Package

- When: After 4 to 5 Days
- Confirm Queen Is Out of Cage (Set Her Free if Not)
- May Have Some Evidence of Queen Activity
- Confirm New Comb
- Inspect Again In A Week To Confirm Queen Activity Then Every Two Weeks





Get Ready For Swarm Season

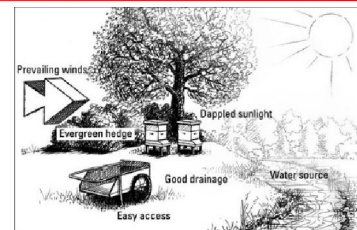
- **Spare Wooden Ware!**
- **Each Hive May Need:**
 - **Additional Brood Boxes**
 - **Additional Hive To House A Split**
 - **New Frames**
 - **One Or More Honey Supers**
- **Could You Hive a Swarm Capture If The Opportunity Arose?**
- **It's Generally Cheaper and Certainly Less Stressful To Have Extra Wooden Ware On Hand Versus Scrambling At The Last Minute When Action Is Needed**





SUMMARY

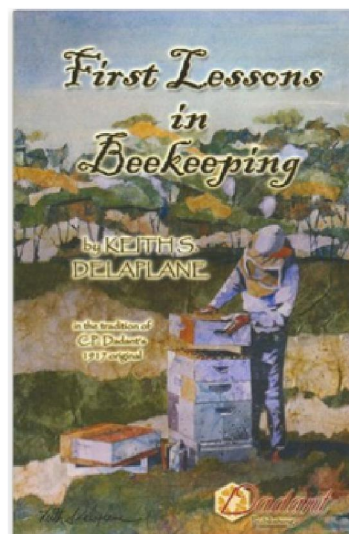
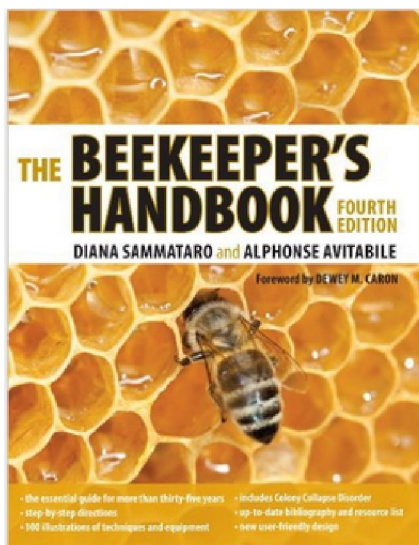
- Pick and Prepare Your Hive Locations
- Set Up Your Stands
- Make Time In Your Schedule For New Bees Installations
- Be Ready To Feed
- Know The Goal of Your First Inspection And Stick To It
- Acquire/Prepare Wooden Ware You'll Need For Swarm Season





Acknowledgments

- You Tube – Brushy Mountain Bee Farm (<http://www.brushymountainbeefarm.com/>)
- You Tube – Beaman's Fork (<http://beamansfork.com/>)
- You Tube – Draper's Super Bee Apiaries, Inc. (<http://www.draperbee.com/>)
- You Tube – Uploaded by Beefitter





QUESTIONS?